

Imagine
what's possible

 **faber**
since 1844

EN

Faber since 1844

Imagine what's possible

With a Faber fireplace you get a truly unique experience. Choose a fireplace that offers perfect moments of warmth, enhances the feeling of comfort and cosiness, and brings people together. With our thoughtful innovations, Faber leads the industry, providing the most comprehensive choice in premium electric and gas fireplaces on the market.

A unique fire experience

In our extensive portfolio, you'll find fireplaces with stunning fire images developed with passion and craftsmanship. Be enchanted by our electric fireplaces with an unparalleled 3D fire experience. The swirling cold water vapour and (LED) lighting create a magical play of flames. And with our MatriX gas series, you can enjoy the distinctive campfire setup, making it seem like you're watching a real wood-burning fireplace. Whether electric or gas, Faber ensures a fire experience that will continuously amaze you.

Choose the future with Faber

With Faber, you make a conscious choice for a fireplace that is ready for the future. You have a wide range of options, including 100% electric fireplaces or energy-efficient hybrid gas fireplaces. Our electric fireplaces have no emissions and consume minimal energy. Faber gas fireplaces are prepared for the future and suitable for (bio)propane and the blending of hydrogen. This way, Faber remains at the forefront of the transition to sustainable, top-quality ambiance fireplaces.

Endless possibilities

Be inspired by the wide range of designs, decorations, and options that Faber has to offer. We believe in absolute freedom of choice so that you can create your dream fireplace that perfectly suits your personal taste and interior desires.





Unmatched quality since 1844

At Faber, we always strive for the best and most beautiful solutions for fireplace enthusiasts, so you can enjoy an amazing flame effect. For over 175 years, we have been developing and manufacturing fireplaces with an eye for detail, in the Netherlands.

At Faber, quality and safety are paramount. All our products comply with the applicable CE EN standards for gas and electric fireplaces. Our electric fireplaces are equipped with antibacterial technology that actively inhibits bacteria and microbes. Safe and sustainable, it reduces bacterial growth with proven results of up to 99.99%. Protection throughout the entire lifespan.

Trust our excellent service

Our fireplaces are designed to be enjoyed worry-free for many years. If, by any chance, something goes wrong, you can rely on our extensive service within the two-year factory warranty. Service requests are often carried out on-site by our network of selected service partners and our own service department. At Faber, we are always here for you.

Discover the true meaning of leadership, empathy, honesty, and trust with Faber. Create a warm and cosy atmosphere in your home while enjoying the highest quality and excellent service. Make the choice for Faber today and experience a fireplace that truly leads the way.

Do you want to be kept informed of our latest product developments? Please follow our socials

@faberfires



FaberInternational





Why opt for an electric Faber fireplace?

- Choose from a wide range of electric options; opt for the e-MatriX Vertical, Mood and Linear, the e-Slim Linear, or our e-BoX series.
- No need for a flue; can be installed anywhere.
- Unique patented three-dimensional “lifelike” fire display; a mesmerizing fire experience time and time again.
- Adjustable multicolour LED lighting; customizable to your own preferences and tastes.
- Adjustable heat output; up to a maximum of 2 kW.
- Easy control via remote control or Faber App (included as standard) for even more possibilities.
- The e-MatriX and e-BoX series offer a choice of decorations; log set, white pebbles, or acrylic ice.
- Our e-MatriX models can be optionally enhanced with top and/or bottom lighting for an enhanced fire experience.
- Available in various sizes and as front, 2-sided, 3-sided, room divider, or see-through models.
- Energy-efficient, 0% emissions, 100% fire display!

e-MatriX Fire of the future



Model:
e-MatriX - MOOD
800-500 II



More info about the
e-MatriX? Scan the
QR code.

Modern homes require very little additional warmth. A traditional fireplace is often not an option or is undesirable. Sustainable construction is a current theme. Additionally, we are increasingly residing in urban areas where exhaust of smoke gas is not always feasible. The unique features of the Faber e-MatriX make it possible to enhance the home with an atmospheric element! Even the crackling of wood is not missing. Ever-changing, captivating, and convincing! Exactly what is expected from an authentic fire experience, but without the traditional limitations!

The “fire” in our electric fires is created using cold water vapour and low-energy LED lighting. Made from pure water and therefore 0% harmful emissions. When the additional heating unit is off, the energy consumption can be compared with a standard television. Energy consumption can be reduced even further thanks to intelligence controls, such as thermostat regulation, open window detection and a function to switch off the fire when not used for a certain period of time.

e-MatriX Burner - Fascinating and responsible

The astonishing flame effect of the e-MatriX is down to a combination of rising cold water mist and low-energy (LED) lights, with no odour or smoke and therefore 100% sustainable.



The result is sheer enjoyment: a playful, three-dimensional fire effect that moves up from the softly glowing embers between the logs to the top of the fire. The flame height is fully adjustable. You can even hear the sound of a crackling fire. An ultra-thin flexible water hose and a regular socket are all that's needed for the connection. A unique way of enjoying a 'log' fire, developed and patented by Faber.

Mood lighting - Extra ambience, at any moment

Our optional Mood lighting lifts the flames effect of the e-Matrix to a level previously unknown. The newly developed LED light optics of this option provide dynamic lighting, both under the entire ember bed and throughout the interior of the fireplace. The light intensity, movement and even colours can all be adjusted to suit your mood. This option gives a strikingly warmer and even more natural look to the flames and glowing effect, while also enhancing your view of the interior, even without 'flames'. All the options can be quite simply adjusted via your Faber app, to suit your atmosphere, mood or style. Or simply choose one of the preprogrammed settings. This option truly enhances the look of your fireplace, and really should be a part of your experience. Available for all e-Matrix Fires.

Wonderful heat in front of the fire

Are you sitting near the fire and you'd like to feel the radiating warmth? The e-Matrix is fitted with a compact, silent (additional) heating unit, that is incorporated invisibly in the fire. When you want, a warm air flow comes your way through the glass. A sensation that makes the experience even more complete. This additional heating unit has a capacity of maximum 2 kW and a thermostat function. The controls are integrated in the remote control and in the Faber app. Giving you optimum control of the heat from your fire at all times.

e-Matrix Vertical

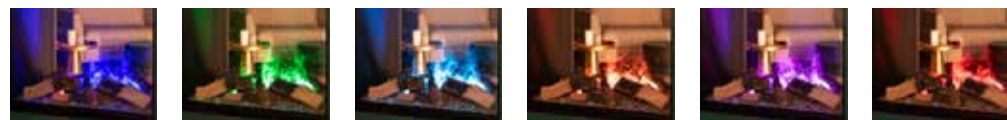
The eyecatcher of your home

Introducing this astonishing new addition to your house: the one and only 100% electric vertical tunnel fireplace on the market! The centrepiece in your home! With its impressive height of 160 cm and a width of 80 cm, this fireplace is one of the largest vertical fireplaces available. Transform your interior into a warm and stylish paradise with this breathtaking fireplace!

Set the perfect ambiance with the adjustable multicolour LED lighting, allowing you to customize it to your liking. Personalize your fireplace with a choice of various decoration options, such as a wood set, white pebbles, or Acrylic ice. For an even more optimal experience, you can opt for bottom lighting. Control the desired warmth with the adjustable 1 or 2 kW heating option.

Maintaining this fireplace is effortless, thanks to its stylish integrated door. Operate the fireplace with ease using the included remote control or take advantage of the Faber App for even more possibilities. Enjoy an energy-efficient fireplace with zero emissions, yet offering a stunning fire display that serves as a captivating focal point in any room. Choose the unique e-Matrix Vertical fireplace and turn your interior into a breathtaking space that everyone will adore.

The e-Matrix Vertical with adjustable multicolour LED lighting; customizable to your liking and taste.



More info about the
e-Matrix Vertical?
Scan the QR code.



e-MatriX Mood

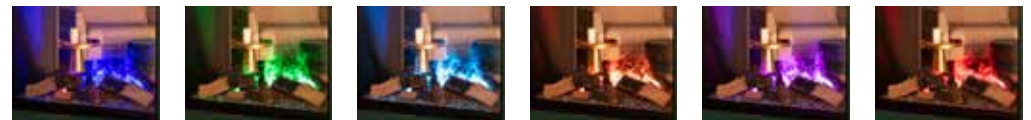
Discover the irresistible charm

Discover the irresistible charm of the electric e-MatriX Mood fireplace, a masterpiece of frameless design and enchanting fire display. Let yourself be captivated by the wide fire, choice in decoration and the optional glow bed, which together create a lush and vibrant fireplace that will fascinate you time and time again.

This revolutionary fireplace is the ideal choice for an authentic fire experience without any hassle. With its groundbreaking features such as truly three-dimensional flames, complete safety, energy efficiency, and the freedom from gas, emissions, and chimney, the e-MatriX Mood provides a future-proof alternative to traditional fireplaces.

Effortlessly adjust the ambiance to your personal preference with the user-friendly Faber app or the convenient remote control. Choose consciously for a responsible and carefree way of enjoyment. Let yourself be amazed by the e-MatriX Mood fireplace and create the perfect atmosphere in any space. Experience the best of both worlds: the timeless character of a traditional fireplace combined with the innovative technology of the future.

The e-MatriX Mood with adjustable multicolour LED lighting; customizable to your liking and taste.



More info about
the e-MatriX Mood?
Scan the QR code.



e-MatriX Linear

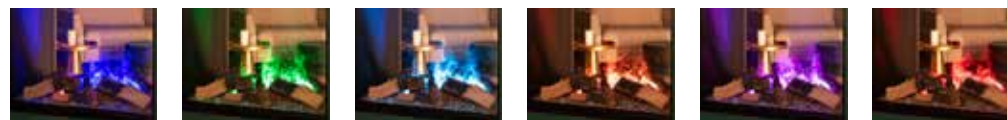
Strikingly Sustainable

Our electric Linear Fires, specially designed to enchant you with their sleek, elongated design. With a unique fire display, beautiful decoration, and a vibrant glow bed (optional), they bring a surprisingly stylish touch to any space. Looking to further personalize your interior? No problem! Choose from a fireplace decoration of white pebbles or Acrylic ice, tailored to your own taste.

The contemporary design of our Linear Fires gives you the freedom to experiment with striking yet sustainable interior design. No more hassle with a chimney or gas connection! Thanks to these innovative features, you can enjoy ultimate flexibility in creating an atmospheric ambiance in your home. Make a statement with a fireplace that not only provides warmth and cosiness but also becomes a centrepiece in every room.

Discover the possibilities of Linear Fires and let yourself be enchanted by the perfect combination of style, functionality, and sustainability. Bring your own stylish fireplace into your home today!

The e-MatriX Linear with adjustable multicolour LED lighting; customizable to your liking and taste.



More info about
the e-MatriX Linear?
Scan the QR code.







A Faber e-Matrix fire

What are my choices?



 e-Matrix Mood fires
800/500



 e-Matrix Mood fires
800/650




 e-Matrix
Linear fires
1050/400








 e-Matrix
Linear fires
1300/400






 e-Matrix
Vertical fires
800/1600




Available in the models:

-  1-Sided
-  2-Sided (left or right)
-  3-Sided
-  See-through
-  Room divider




Available in the models:

-  1-Sided
-  2-Sided (left or right)
-  3-Sided


Available in the models:

-  1-Sided
-  2-Sided (left or right)
-  3-Sided

Available in the models:

-  1-Sided
-  2-Sided (left or right)
-  3-Sided

Available in the models:

-  See-through

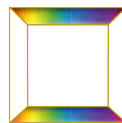
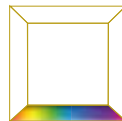
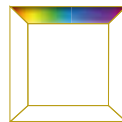
Choose from the various options (at a surcharge)

The e-MatriX models offer various options for fires. In the Mood and Linear fires, you are free to choose your favourite decoration. Options are a log set, white pebbles or Acrylic ice.



Lighting

Our optional lighting lifts the flames effect of the e-MatriX to a level previously unknown. The newly developed LED light optics of this option provide dynamic lighting, both under the entire ember bed and throughout the interior of the fireplace. The light intensity, movement and even colours can all be adjusted to suit your mood. Would you simply like extra light at the base? That's not an issue, as both light modules can be separately ordered.



More benefits:

Including:

- Additional electric heating unit
- Choice of decoration
- Faber App controls
- Inset depth 50 mm

Options:

- Non-reflective glass
- Black glass rear wall
- Wall bracket (if applicable)

More information?

Do you want more information about our models, technical data of our fireplaces and line drawings? Ask the local Faber specialist or visit faberfires.com.





e-SliM Linear

Panoramic fire and a small built-in depth

The innovative e-SliM Linear redefines the high-quality electric fireplace. Thanks to the strikingly low installation depth, you can now install the astonishingly real fire effect that is consisting of light and water vapour in even more places than ever before. Available in 3 widths, for an attractive enrichment of every wall, every concept, at every location. An endless opportunity to play responsibly with fire!

The electric e-SliM Linear has been specially developed for anyone looking for an electric built-in fire with a beautiful panoramic fire view and at the same time a small built-in depth. For example, as part of a modern cine wall setup, for an impressive wall design, or as an extremely stylish alternative in well-insulated homes without a gas connection and flue pipes. The ease of use is also of a high level, thanks to the supplied remote control and Flame Connect App. Due to the choice of 3 different widths, there is always an e-SliM Linear that suits your interior wishes.

Minimum consumption and maintenance, maximum ease of use

The power consumption of the fire image is virtually nil due to the energy-efficient LED lighting. In addition, the e-SliM Linear uses a maximum of a few litres of tap water per day (when used continuously). This makes these fires very energy efficient and completely emission-free. Only a regular socket, a (thin) flexible water connection or reservoir with pump are sufficient for the connection. Moreover, maintenance is minimal.

More info about the e-SliM Linear?
Scan the QR code.



Available in the models:



1-Sided

Available in sizes:



1200/450
1700/450
2200/450





e-BoX

... a surprising alternative

The electric Faber e-BoX series has been developed especially for true fire connoisseurs who are looking for a complete and 100% future-proof alternative to an atmospheric gas or wood fire. The Faber e-BoX series provides a unique solution for the full enjoyment of a swirling, atmospheric fire, without the traditional limitations that may be associated with a built-in gas or wood fire. For example, limitations because of the living environment (city), apartment blocks, the lack of a connection to the gas grid or a chimney, or because there is no room to build in a fire.

e-Box Burner - Top quality and unique

Faber is introducing a second electric burner for the e-BoX series, based on the burner of the e-MatriX. The flame effect is produced by the combination of cold-water mist and special LED lights - a patented invention. This unique combination produces a three-dimensional effect that looks convincingly like flames and smoke, swirling up through a decoration of logs, white pebbles or sparkling acrylic crystals. An ultra-thin flexible water hose and a regular socket are all that's needed for the connection. Another water supply option is to use a built-in reservoir and optional 'pump kit'.

Built-in heat

The e-BoX comes standard with a small additional heating unit with a maximum capacity of 1kW that is incorporated invisibly in the fire. The warm airflow is blown into the room through an opening in the pane. The controls are integrated in the remote control. Comfortable and controllable heat.

Available in the models:



1-Sided



See-through

Available in size:



1000/450

More info about the e-BoX?
Scan the QR code.











Why opt for an Faber gas fireplace?

- A wide range of sizes and models to ensure there's always a fireplace that suits you perfectly. Whether you're looking for a compact fireplace for a cosy space or an impressive centrepiece for a spacious living room, we have the right options for you.
- Our fireplaces are equipped with adjustable burners, allowing you to customize the fire display exactly to your liking. Whether you prefer a calm and subtle flame effect or a powerful and intense fire display, our fireplaces can be tailored to your taste.
- With a heat range from 1,5kW to 10kW, it's easy to adjust to your heating needs. Whether you desire a subtle heat source during a balmy summer evening or a powerful heater for the winter months, our fireplaces can meet all your expectations.
- Choose the optional glow bed lighting (HPL or Symbio) to create an even more vibrant fire display. This addition enhances the flame effect, bringing a captivating ambiance to your space.
- Select from a choice of a wood set or white pebbles to customize your fireplace to your liking. Whether you prefer the rustic charm of a wood set or the modern and sleek look of white pebbles.



Your ultimate fireplace experience,
**according to your
style and preference**

Discover the future of heating with our innovative collection of gas fireplaces! In these modern times, where sustainability and style go hand in hand, traditional fireplaces don't always fit the picture anymore. Fortunately, there's now a solution that perfectly aligns with the needs of contemporary desires.

Explore our revolutionary hybrid MatriX ambiance fireplaces, where gas and LED light come together in perfect harmony, akin to hybrid cars. With the innovative Hybrid Pro Lighting (HPL) system, the gas flame is partially replaced by energy-efficient LED light, resulting in a fire glow that surpasses any ordinary gas fireplace. Enjoy a more intense and immersive fire image while saving up to 50% on gas consumption, CO2 emissions, and heat.

Our MatriX fireplaces offer a range of built-in widths and models, including Linear Fires with a wide view of the flames. Choose from horizontal logs with a glowing bed or stylish white pebbles for interior decoration. Easily control your fireplace via remote control or the Faber App on your smartphone or tablet. For freestanding gas fireplaces, there are various designs tailored to your taste and interior, with options for hanging or standing models. A suitable option is available for every interior style.



MatriX Hybrid:

Faber Log Burner® 3.0 - the innovative Log Burner® 3.0

Faber's Log Burner® 3.0 is a groundbreaking, efficient, and hybrid burner technology. The burner tubes follow the natural shape of wood logs, creating an incredibly realistic wood set. With 7 burners, the fire distributes itself precisely, resulting in fascinating flame patterns. This burner works perfectly with the optional HPL module featuring LED technology, allowing you to create a full and rich fireplace with reduced gas consumption and heat production. Easily control the main functions with the included remote control, while the Faber App offers additional features. Explore Faber's latest development and enjoy an unparalleled fireplace experience!

Hybrid Pro Light Module - New light on a gas fire

The Hybrid Pro Light module, a groundbreaking technology in ember effects. With a natural glow on the ember bed and wood logs for a more intense fire image. It is an evolution of the successful Symbio® module. Enjoy captivating flames, sparkling wood logs and embers, even at low fire settings. It's as if you're looking directly at a burning fireplace, with half the gas consumption and heat production.



MatriX:

Faber Log Burner® 2.0 - The pure experience of a camp fire

The Log Burner® 2.0 brings memories of a flickering campfire to life in an unprecedented way, with upright wood logs in the center surrounded by lying blocks. You can choose to have the fire burn only in the center or all around. The fireplace starts up within seconds, and the height of the flames is precisely adjustable. The ember bed is illuminated from below by ember bed lighting, giving the fire a full and rich appearance even with low flames, with a warm glow. The ember bed glow can also be activated separately, like a glowing fire.

Glowing embers lighting - The atmosphere of red-glowing charcoal

Create the perfect ambiance with Symbio®! This module gently pulsates heat-free light onto the ember bed, creating a beautiful warm red glow. Even when the flames of your fireplace are low or completely turned off, the Symbio® module adds extra coziness to any space. With energy-efficient LEDs, this module is not only environmentally friendly but also completely safe without heat emission. Transform your fireplace into an enchanting and relaxing environment with Symbio®. Let the light shine and enjoy the perfect ambiance without worrying about energy consumption or heat development.

Matrix Hybrid

The unique interplay between gas and light

With the Matrix Hybrid gas fireplace, Faber once again pushes the boundaries in the world of fireplaces. If you may think that fewer “real” flames mean a less realistic fire, you’re mistaken. Faber’s “HPL” LED technology actually adds a new dimension to gas fireplaces, allowing you to create an even more impressive fire display with the same ease and less gas. All at the push of a button on the remote control or a tap on your smartphone or tablet.

Save up to 50% on your gas consumption without compromising on the ultimate fire experience. Discover our revolutionary hybrid fireplace, equipped with the optional Hybrid Pro Light module for an even richer fire display, even at the lowest setting. Enjoy a horizontally oriented fire display with beautifully evenly distributed flames across the entire width of the fireplace.

With a total of 7 different burners, you can customize the fire display to your preference, creating the perfect ambiance for every situation. Furthermore, the heat output is adjustable from a maximum of 10 to just 1.5 kW, making this fireplace ideal for modern, well-insulated homes with low heating needs. Available in various sizes and models, including front-facing, 2-sided, and 3-sided versions, room dividers, and see-through models.

More info about the
Matrix Hybrid?
Scan the QR code.





Matrix

The perfect fireplace for every situation

Discover our extensive selection of Matrix fireplaces, where there's always a perfect fireplace for every situation. With our wide range of sizes and models, we effortlessly find the fireplace that seamlessly fits into your interior.

And that's not all. With the optional Symbio® glow bed lighting, we create a stunning fire display even when the flames are extinguished. You'll be amazed by the rich glow that our glow bed brings.

Moreover, our fireplaces offer high-flaming flames with realistic ceramic logs, evoking a traditional campfire experience. You can enjoy the deep and intense fire display thanks to our 5 switchable burners. With the ability to adjust the heat output to your preference, ranging from a maximum of 10 to a minimum of 4 kW, you can always create a comfortable, warm, and cosy environment.

Whether you're looking for a Front-facing, 2-sided, or 3-sided model, a Room divider, or a See-through model, we have it in our portfolio. Enhance your interior with the perfect Matrix fireplace and let the warmth and ambiance embrace your home.

More info about the
Matrix?
Scan the QR code.



Matrix Linear

the ultimate fire experience for your home.

Our Linear Fires offer a generous fire display across virtually the entire width of the fireplace, regardless of the desired flame height. Even with minimal heat demand, these models perfectly accentuate the beautiful flames.

With Matrix Linear, you enjoy freedom of choice. Choose from various built-in widths and three installation variants, ensuring the fireplace seamlessly fits your interior. Create a unique atmosphere that reflects your style with a range of interior decorations. Our Linear Fires combine popular width and height, providing you with a spacious view of the flames. These models add significant extra length and emphasize the low silhouette of the linear range. Enjoy a stylish fire along the entire length of these impressive fireplaces. Select from stunning horizontal logs with a glowing bed or stylish white pebbles for decoration.

Experience the Faber Double Line Burner: a wide, elongated, and tranquil fire that creates a serene ambiance in any space. The flames burn regularly and fully across almost the entire width of the fireplace. Choose to have a single row of flames at the front or activate both the front and back for an even fuller fire display and more warmth. With quick startup and precise flame height control, this fireplace offers ultimate comfort and convenience.

Easily operate the main functions with the included remote control. For ultimate convenience, install the Faber App on your smartphone or tablet and control the fireplace with a simple tap.



More info about the
Matrix Linear?
Scan the QR code.





A Faber MatriX fire

What are my choices?



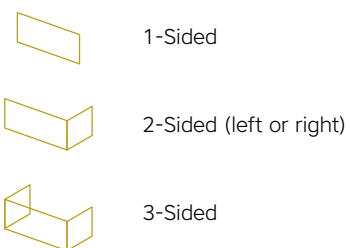
 MatriX fires
450/500

Available in the models:




 MatriX fires
450/650

Available in the models:

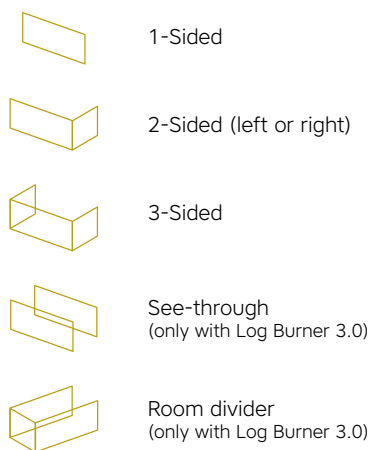


MatriX Log Burner® 2.0



 MatriX fires
800/500


Available in the models:



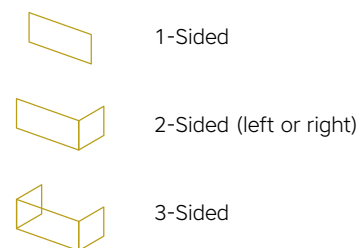
Choice of:

MatriX Log Burner® 3.0
MatriX Log Burner® 2.0



 MatriX fires
800/650

Available in the models:



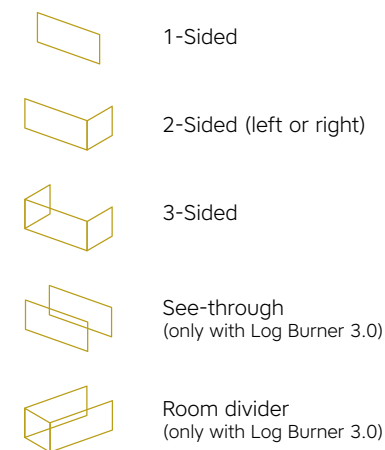
Choice of:

MatriX Log Burner® 3.0
MatriX Log Burner® 2.0



 MatriX fires
1050/500

Available in the models:



Choice of:

MatriX Log Burner® 3.0
MatriX Log Burner® 2.0

More information?

Do you want more information about our models, technical data of our fireplaces and line drawings? Ask the local Faber specialist or visit faberfires.com.



Matrix fires
1050/650

Available in the models:



1-Sided



2-Sided (left or right)



3-Sided

Choice of:

Matrix Log Burner® 3.0
Matrix Log Burner® 2.0



Matrix Linear fires
800/400

Available in the models:



1-Sided



2-Sided (left or right)

Double Line Burner

Note: Discontinued model, still available in limited quantities.



Matrix Linear fires
1050/400

Available in the models:



1-Sided



2-Sided (left or right)



3-Sided

Double Line Burner



Matrix Linear fires
1300/400

Available in the models:



1-Sided



2-Sided (left or right)



3-Sided

Double Line Burner

Choose from the various options

(at a surcharge)

Including:

Faber app controls*
Inset depth 50 mm
Choice of decoration**

Optional:

Inset depth 30 mm
Inset depth 100 mm
HPL Module (Log Burner® 3.0)
Symbio® Module (Log Burner® 2.0)
Non-reflective glass
Black glass rear wall
Adjustable feet
Wall bracket (if applicable)

Choose your own style of decoration for a Linear Fire. The options are a modern log set or white pebbles.



* with the exception of the 450 models)
** only for the Linear models

No natural gas connection
**but you'd love a
gas fire?
No problem!**

You no longer have a permanent gas connection or you'd rather not be dependent on one, but you'd still like a gas fire in your home? No problem! All Faber gas fires are suitable immediately for use on propane gas or (bio)propane gas. The gas does not come via the gas pipe to the gas fire, but through smartly connected gas bottles. If you would like to find out more about the options of propane or biopropane, please take a look at the Faber website at: faberfires.com.





Inset depth **Flexible** application

When you insert a Faber fire from the (e)MatriX series, you have a choice of having the fire and frame inset, or to have the glass of the fire flush with the material of the surround. Each Faber (e)MatriX fireplace is supplied standard with a black steel in 50 millimetres wide, depending on the model and your preference. The MatriX gas fires also offer the option of a depth frame of 30 or 100 millimeters.

Faber App Convenience is enjoyment.



Control

your fireplace easily with the app.

The Faber App gives you complete control over your Faber (e-)MatriX fireplace. As well as using the remote control supplied, you can also use your own tablet or phone. From the convenient screen of your device, you can manage all the functions and settings of your fireplace.

In addition to the standard functions, the Faber app also offers extensive customisation options. For example, for MatriX (gas) fires, you can choose from five special mood presets: constant, relaxed, campfire, party and eco. If you have an e-MatriX electric model, you can fully customise the lighting and colours via the app.

With the Faber app, you are in control and can adjust all the options to suit your needs. In the event of a malfunction, the app gives the specialist a clear insight into the technical core of your (e-)MatriX fireplace. In addition, the app ensures that you are reminded in good time of periodic maintenance, including the contact details of the specialist or dealer.





Faber
Domotica



Faber Domotica set

Discover the endless possibilities of the Faber Domotica Box! With this smart accessory, your fireplace becomes a true masterpiece of convenience and comfort. The box can be connected to various systems such as KNX, high-end hotel solutions, as well as simple on/off systems. The Faber Home Automation Box seamlessly integrates with your smart home, giving you full control over your fireplace and even allowing you to save energy. Additionally, through our collaboration with ABB/Busch-Jaeger SmartHome, you're also assured of a seamless connection between your Faber fireplace and products from brands like Sonos, Philips UE, and Velux. This way, you create an integrated and advanced smart home that perfectly aligns with your desires and lifestyle. Get the most out of your fireplace and experience a new dimension of fireplace enjoyment with the Faber Home Automation Box. The Faber Home Automation Box is only compatible with recent Faber (e-)MatriX devices.

Faber 3-button panel

Specially designed for simplicity in homes, hotels, restaurants, and similar locations, this panel offers an effortless and stylish way to enhance comfort and ambiance in any space. Thanks to the three intuitive control buttons for on/off, heat, and sound, the panel is highly user-friendly. This wall-mounted panel replaces separate remote controls and provides a centralized and elegant point of control. The easy installation and seamless integration into any interior make it an essential accessory for a refined fireplace experience. Elevate the comfort and ambiance in any room with this stylish and user-friendly control option.

Faber 2-button panel

The Faber 2-button wall panel is a slim and compact remote control that simplifies the operation of Faber (e-)MatriX fireplaces. Specially designed for hotels, restaurants, and similar locations, this panel offers an effortless and stylish way to enhance comfort and ambiance in every room. With two intuitive buttons for on/off control and a dedicated mood switch function, you have command over the fundamental fireplace settings. This wall panel replaces separate remote controls and provides a centralized and elegant point of control. The straightforward installation and seamless integration into any interior make it an indispensable accessory for a sophisticated fireplace experience.

For our full range and inspiration,
as well as options, visit:

www.fabers.com

